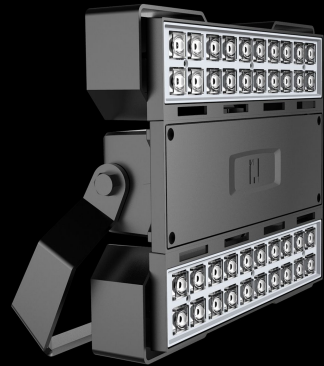


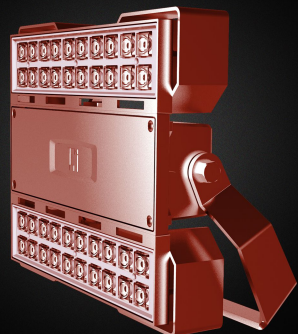
# TRANSFORMER II

The glow of success, transforming facade to fantasy





TRANSFORMER II  
TERRA-FIC series



SPECIFICATION Led Luminaire

- Pressure die cast Aluminium alloy body with corrosion resistance Powder coated
- Injection moulded PMMA lens act as secondary optics and front cover
- Silicon encapsulated high efficiency isolated integral driver
- Additional external surge protector upto 10KV/5KA
- Comply 50,000 burning hrs as per L70 standard
- IP66 (Dust Tight, Water Tight)
- Options : Colour-Sterling/Ebony/Terrafic

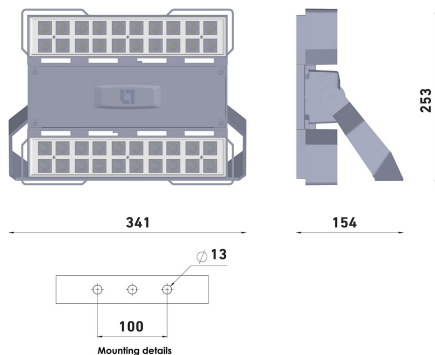
ORDERING DETAILS

LED LUMINAIRE

IP 66 240V Class I Weight 4 Kgs

Ordering Code	Power (W)	Line Current (A)	PF
T100CTFXYZ	100	0.48	>0.95
T125CTFXYZ	125	0.60	>0.95
T150CTFXYZ	150	0.72	>0.95
T170CTFXYZ	170	0.82	>0.95

White : CT = 57 (Cool White, 5700K) CT = 30 (Warm White, 3000K)  
 RGB : CT = CR ( Red) CT= CG(Green) CT= CB(Blue) CT= RG(RGB)  
 X = S (Sterling, Silver Grey) X = E ( Ebony, Black) X = T (Terrafic, Terra cotta)  
 Y = 1 (10° Beam angle) Y= 3 (30° Beam angle) Y= 6 (60° Beam angle) Y = W (100° Beam angle)  
 Z = D ( DMX) Separate Cotrol gear box may required for DMX driver



SPECIFICATION Led Luminaire

- Pressure die cast Aluminium alloy body with corrosion resistance Powder coated
- Injection moulded PMMA lens act as secondary optics and front cover
- Silicon encapsulated high efficiency isolated integral driver
- Additional external surge protector upto 10KV/5KA
- Comply 50,000 burning hrs as per L70 standard
- IP66 (Dust Tight, Water Tight)
- Options : Colour-Sterling/Ebony/Terrafic

ORDERING DETAILS

LED LUMINAIRE

IP 66 240V Class I Weight 3 Kgs

Ordering Code	Power (W)	Line Current (A)	PF
T055CTFXYZ	55	0.26	>0.95
T070CTFXYZ	70	0.33	>0.95
T080CTFXYZ	80	0.41	>0.95

White : CT = 57 (Cool White, 5700K) CT = 30 (Warm White, 3000K)  
 RGB : CT = CR ( Red) CT= CG(Green) CT= CB(Blue) CT= RG(RGB)  
 X = S (Sterling, Silver Grey) X = E ( Ebony, Black) X = T (Terrafic, Terra cotta)  
 Y = 1 (10° Beam angle) Y= 3 (30° Beam angle) Y= 6 (60° Beam angle) Y = W (100° Beam angle)  
 Z = D ( DMX) Separate Cotrol gear box may required for DMX driver

